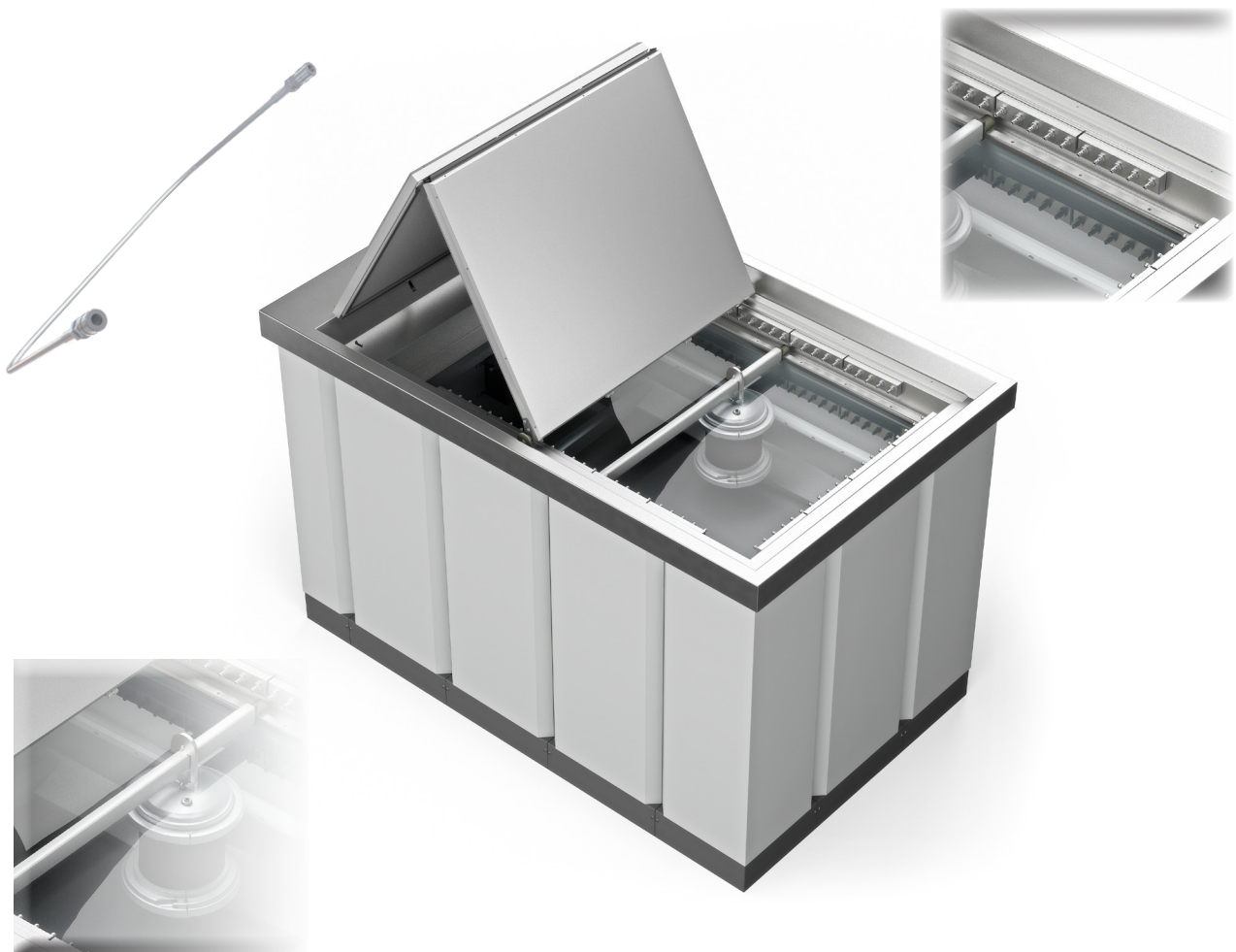
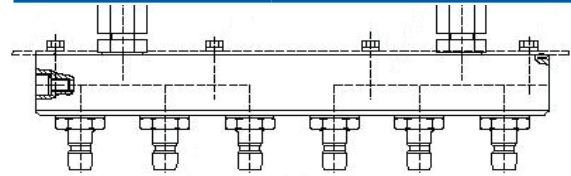


TEST BATH ACCESSORIES



MANIFOLD



BRASS VERSION

2 x 3 polig DN 5
1 x 5 polig DN 5
1 x 6 polig DN 5
5 x 1 polig DN 5
6 x 1 polig DN 5

ARTICLE-NO.

MAX. 125 BAR

MAX. 250 BAR

V1540-0002	V1540-0046
V1540-0003	V1540-0055
V1540-0004	*
V1540-0005	V1540-0076
V1540-0006	V1540-0066

STAINLESS STEEL VERSION

2 x 3 polig DN 5
1 x 5 polig DN 5
1 x 6 polig DN 5
5 x 1 polig DN 5
6 x 1 polig DN 5

ARTICLE-NO.

MAX. 125 BAR

MAX. 250 BAR

V1725-0001	*
V1725-0015	*
*	*
V1725-0004	*
V1725-0005	*

CONNECTION HOSE



LENGHT

500 mm lenght
1000 mm lenght
1500 mm lenght
2000 mm lenght
2500 mm lenght
3000 mm lenght

ARTICLE-NO.

MAX. 125 BAR

MAX. 250 BAR

V1074-0007	*
V1074-0002	V1074-0023
V1074-0003	V1074-0022
V1074-0004	V1074-0033
V1074-0005	*
V1074-0006	V1074-0029

Further lengths available upon request.

✓ included

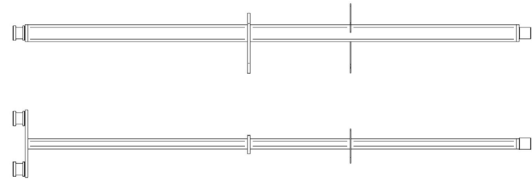
+ available/optional

○ eligible

- not available

* available upon request

RAILS FOR SAMPLE SUSPENSION

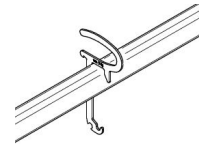


FOR INSIDE TEST BATH WIDTH X RAIL THICKNESS - PERMISSIBLE WEIGHT

ARTICLE-NO.

For inside test bath width 500 x 30 mm - 80 kg	V1079-0052
For inside test bath width 700 x 30 mm - 60 kg	V1079-0053
For inside test bath width 1.000 x 30 mm - 160 kg	V1079-0043
For inside test bath width 1.500 x 30 mm - 108 kg	V1079-0048
For inside test bath width 2.000 x 30 mm - 80 kg	V1079-0051
For inside test bath width 2.000 x 60 mm - 460 kg	V1590-8029

SUSPENSION HOOK „EASY LIFT“



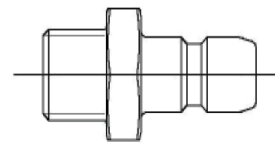
PERMISSIBLE WEIGHT

FOR SUSPENSION RAILS IN MM

ARTICLE-NO.

15 kg	50 x 30	V1079-2186
330 kg	50 x 30	V1079-2187
15 kg	100 x 60	V1079-2178
270 kg	100 x 60	V1079-2107
330 kg	100 x 60	V1079-2190
650 kg	100 x 60	V1079-2188

PLUGS



THREAD

BAR

ARTICLE-NO.

G 1/4"	max. 125	1181-2011
G 1/4"	max. 125	1181-2056
G 1/8"	max. 250	1181-2118
G 1/8"	max. 250	1181-2141
Double Plug		1181-2095

✓ included

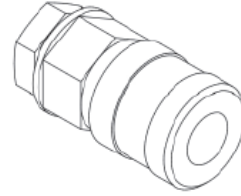
+ available/optional

○ eligible

- not available

* available upon request

BLIND COUPLING



VERSION

ARTICLE-NO.

Blind coupling brass DN 5 - max. 125 bar

V1057-0001

Blind coupling brass DN 6,5 - max. 250 bar

V1057-0005

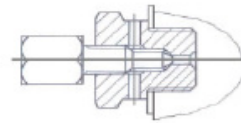
Blind coupling stainless steel DN 5 - max. 125 bar

V1057-0002

Blind coupling stainless steel DN 6,5 - max. 250 bar

V1057-0006

BLEEDING SCREW



VERSION

ARTICLE-NR.

Bleeding screw 1/4" with insert

1181-8003

Bleeding screw 1/8" with insert

1181-8009

✓ included

+ available/optional

○ eligible

- not available

* available upon request
