

Model no. 1629

RCP-S4-TESTER



According to

ISO 13477

The RCP S4 tester conveniently and accurately determines the critical pressure and critical temperature for rapid crack propagation in thermoplastic pipes.

EASY AND SAFE OPERATION

- > Protection of the operator by operating the controller outside the hazardous area (e.g. behind a suitable protective wall at a safe distance from the tester frame) or outside the test room
- > Acoustic and visual signals
- > Easy connection of the sample via quick-release plug coupling
- > Easy to replace sample supports
- > Automatic reduction in pressure at the end of the test

RELIABLE TEST RESULTS

- > Measurement of the precise strike speed of the blade via a photoelectric barrier

LASTING EFFICIENCY

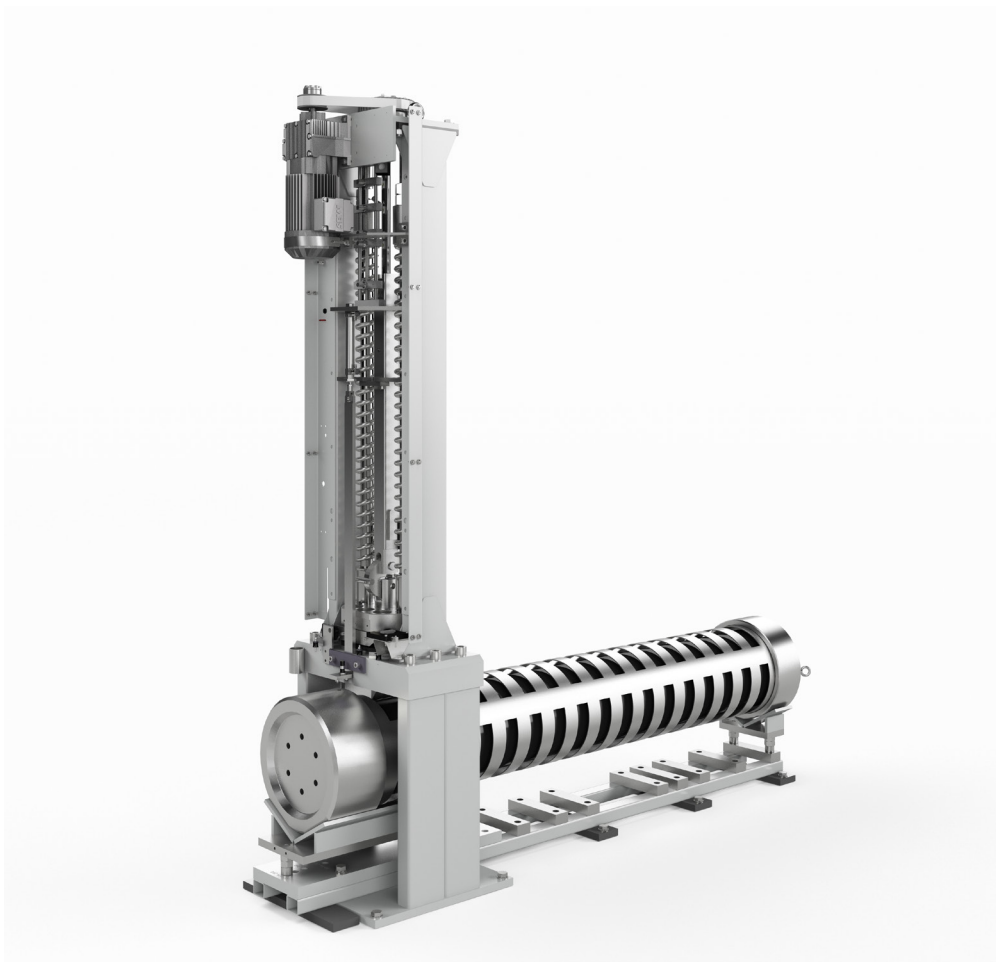
- > Motor-operated test unit
- > The automatic procedure guarantees that the test is performed well within in the specified testing time

STANDARD EQUIPMENT

- > Basic unit with sample containment cage up to 250 mm
- > Selectable strike speeds: 10 - 20 m/s
- > Parameterisation via Touch-Display

OPTIONS

- > Test kits and corresponding striker blades
- > Test chamber/cell
- > Assembly and disassembly equipment



VERSION RCP-S4-TESTER		V1629-0005
Sample dimensions	mm	32 to 250
Speed of the striker blade	m/s	10 to 20 generated via pressure springs tensioned by an electric motor
Measurement of speed		via photoelectric barrier
Regulation of filling pressure		manually via pressure reducer
Regulation of test pressure		PLC-controlled
Pressure transducer	bar	max. 25
Absolute measuring accuracy	%	0.5 of full scale of pressure transducer
Operation via		Touch-Display
Pressure adjustment		freely selectable
Display of filling pressure		manometer (max. 25 bar)
Display of test pressure		Touch-Display
Compressed air supply		from 30 bar external compressed air supply unit max. 40 bar, min 750 l/min (not included in the scope of delivery)
CE conformity		✓
Permissible ambient temperature	°C	+5 to +30
Permissible relative humidity	%	max. 70% non-condensing
Noise emission	dB(A)	< 70 at rest ≥ 120 when the striker blade strikes the sample (dependent on diameter)
Test unit (W x D x H)	mm	500 x 2,060 x 2,100
Weight of test unit	kg	410
Control panel (W x D x H)	mm	700 x 410 x 1,100
Weight of control panel	kg	90
Voltage data		230/400V, 50/60 Hz * other voltages

✓ included

+ available/optional

○ eligible

- not available

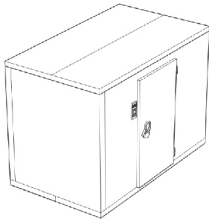
* available upon request

ACCESSORIES RCP-S4-TESTER

Product

Description

Model no.



Cooling cabinet

H3026
