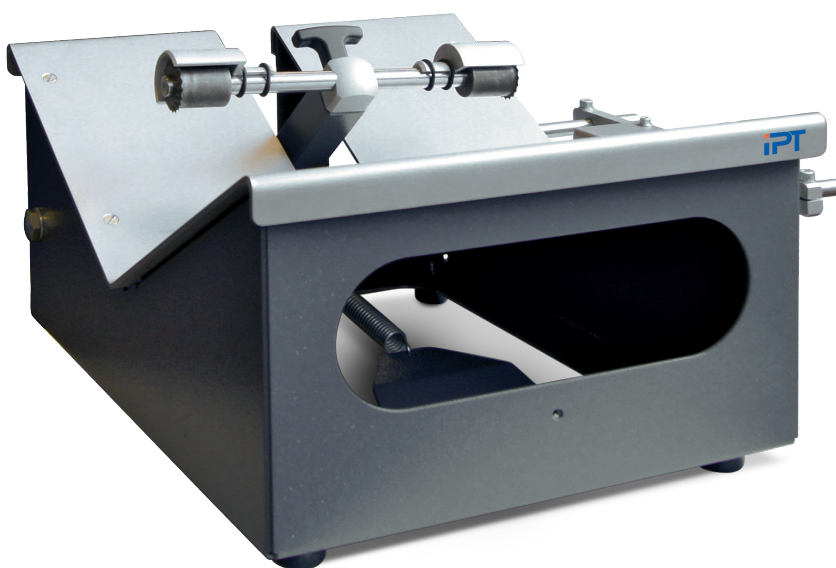


Modell Nr. 1291

## MARKING GAUGE



According to

ISO 2505

To determine the change in length as a result of warm storage, the marking gauge can be used to mark exact parallel circles on the outer surface of pipe segments with a diameter of up to 400 mm.

**EASY AND SAFE OPERATION**

> Protection from cuts thanks to covered marking blades

**LASTING EFFICIENCY**

> High-quality unit components guarantee high reliability, a long service life and low maintenance costs


**VERSION MARKING GAUGE**

V1291-0005

According to		DIN/ISO
Maximum diameter of a specimen	mm	400
Distance of the marking blades	mm	100 (*different distance)
CE conformity		✓
Width x Depth x Height	mm	400 x 360 x 195
Weight	kg	ca. 5,5
Specimen lenght	mm	140 - 300

✓ included      + available/optional      O eligible      – not available      \* available upon request

**ACCESSORIES MARKING GAUGE**

Product	Description	Model no.
	Hot air oven	H3014